

# EXCLUSIVE PANEL DISCUSSION

## Fiber Solutions for Next-Gen Broadband



Thursday, March 6th



2:00pm EST



DISCUSSION  
PANEL



Alex Cernik  
Fiber Product Manager  
Winncom Technologies



Keith Hyde  
VP of Sales  
ViaPhoton



# Fixed Wireless Access Connectivity Solutions



SCAN TO LEARN MORE



**Outdoor Fiber and Power Jumpers**

Hybrid and Discrete



**Base Enclosure**

With or Without Lightning/ Surge Protection



**viaPhoton fisher™**  
Intelligent Backup Power



**Rack Mount Surge Protection Panel**

6 or 9 Remote Radio Heads  
With Surge Protection



**Outdoor Hybrid Enclosure**

Supports 3, 4, 6 or 9 Remote Radio Heads  
With or Without Lightning/ Surge Protection  
Provides Power and Fiber Breakout

**Outdoor Hybrid Fiber Trunk**

With Accessories





## Simplify Your Wireless Broadband Solution

viaPhoton's groundbreaking software, revolutionizes wireless broadband development by automatically optimizing fiber and power connectivity up the tower. Its real-time visualization ensures an error-free Bill of Materials in minutes.

### How TowerMap™ Works



#### Data Input

Provide essential data like number of radios, tower height, Surge Protection, etc.



#### Network Design

Utilize TowerMap™'s tools for an efficient, high-performing network.

#### Real-Time Visualization

Review and refine your design with live visuals.

## Experience the Future of Fixed Wireless Planning

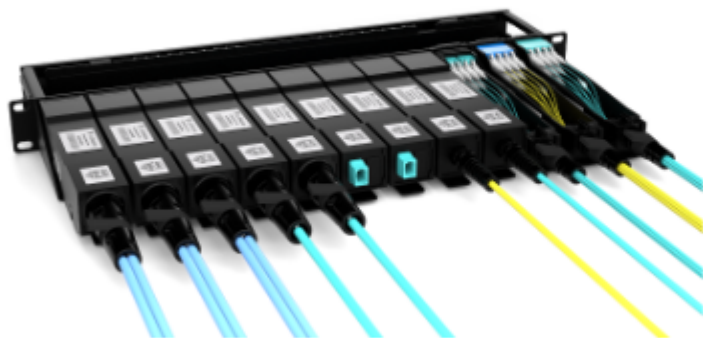
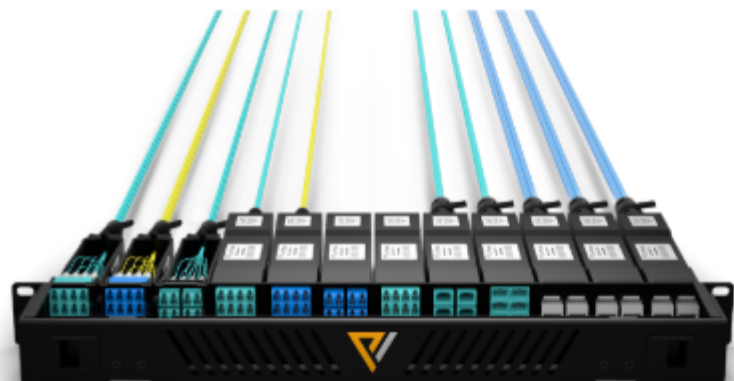
Empower your team, streamline workflow, and create exceptional networks. Discover TowerMap™ today at [winncom.towermap.viaphoton.com](http://winncom.towermap.viaphoton.com).



# HyperReach™

TM

Fast, Simple Installation  
Superior Performance  
Highest Density  
Maximum Flexibility



## Preterm Copper Trunk Module Solution



### Out-of-Band Management

- 1Gbps data rate

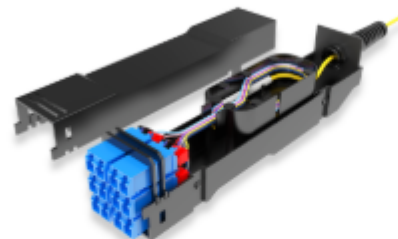
## Preterm Fiber Trunk Module Solution

### Maximum Density and Flexibility

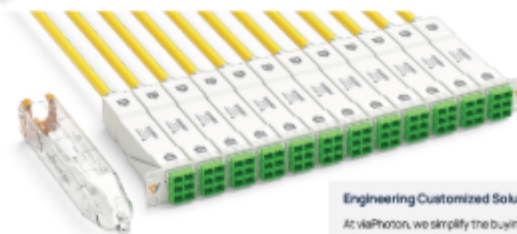
- Base 8, base12, Base16
- Up to 16f per module
- Max 192 LCs per 1U space
- Max 432 SNs per 1U space
- Removable and reusable pulling eye cap



## Blunt Trunk Cables Modular Splice Solution



Blunt  
Trunks



viaPhoton

Engineering Customized Solutions for All Your Connectivity Needs  
At viaPhoton, we simplify the buying experience and leverage cutting-edge US-based manufacturing technologies to make our customers' lives easier.

## HyperReach™ Fiber Trunk Module

viaPhoton's award-winning patented HyperReach™ pre-terminated fiber solution with bullet train is uniquely designed to offer maximum density and fast, simple installation. Its superior performance supports the latest multi-mode and single-mode fiber applications from 10G to 800G and beyond.

### Key Features of HyperReach™ Solution

**Rapid Installation:** Reduce installation time by up to 90%

**Superior Performance:** Eliminate MPO connection points for lower loss

**Highest Density:** Slimline modules increase capacity by 33%

**Maximum Flexibility:** Modules range - 8 fiber to 288 fiber per module [ 3456 per 1U panel ]

Connector	# of Fibers in 1U Panel
CS	288
SN	432
MPO	1152/1536
SN-MT16 / MMC16	3456



### Benefits of HyperReach™ Installation with Bullet Train

**Fully protected module during installation:** Reduces risk during installation

**Install multiple modules in a single pull:** Daisy-chain the modules

**Eliminate Testing:** Limited lifetime warranty w/o field testing

Upto 90% saving in labor cost with HyperReach™ installation with bullet train



# HyperAccess<sup>TM</sup>

Robust  
Versatile  
Flexible

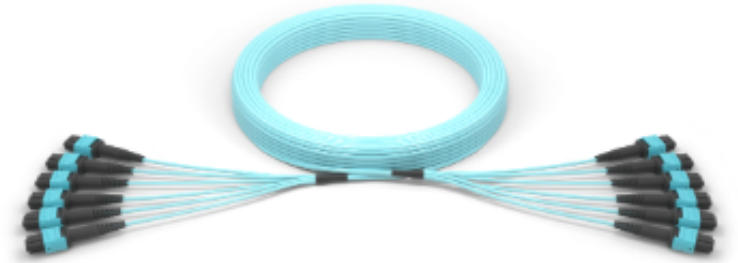
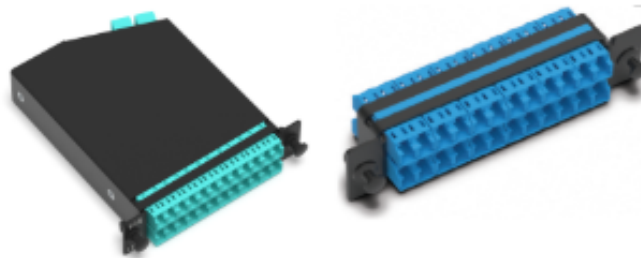


## HyperAccess Rack-mount Panel

- 96f per 1U
- 4 slots per U
- 1U, 2U, and 4U panels
- Supports HyperAccess Modules
  - MPO/LC Modules
  - MPO Conversion Modules
  - LC/LC and MPO/MPO Adapter panels
  - Splice Modules

## HyperAccess Modules

- Traditional footprint
- Supports all DC applications
- Very robust solution



## Preterm Fiber Trunks

- Corning Glass (Non-ribbon Cable)
- 2f – 3456f
- MPO, LC, SN Connector types

		viaPhoton HyperReach™	Other Solutions
DENSITY	MPO	1,152 fibers per 1U	864 fibers per 1U
	VSFF	3,456 fibers per 1U	2,304 fibers per 1U
	Copper	48 ports per 1U	NA
FLEXIBILITY	Multimedia	Housing supports Base 2/8/12/16/Copper	Housing shelves are specific to base 8 & 12. No Copper
	Size	1U and 2U	1U/2U/3U/4U
SCALABILITY	Migration to parallel optics	Yes	Yes
AVAILABILITY	Lead time	Typical 1-2 weeks	Typical 3-4 weeks
	Transit	Primarily manufactured in Aurora IL	Primarily manufactured in Mexico
PERFORMANCE	Max MPO/MTP Loss	0.35db	0.35dB
	Link Loss	0.2dB (Fiber Trunk Module)	0.7dB
INSTALLATION TIME	Cable Placement	Standard	Standard
	Cable Preparation	0 min (Fiber Trunk Module)	20 min
	Module Installation	1 min	3 min
MISCELLANEOUS	Consumables per Fiber	\$0	\$3



Our award-winning HyperReach™ Solution is a high-density integrated data center fiber and copper cabling solution that simplifies the design, ordering, and installation of the cabling infrastructure. The unique, modular design enables multiple physical layer designs to be housed in the same panel, permitting splicing, LC, MPO, VSFF, and copper connectivity.



# HyperReach™

## Increase Velocity of Installation - Bullet



### CASE STUDY

#### GLOBAL HYPERSCALER BUSINESS ISSUES

- Increase in cabling demand
- Lack of skilled labor
- Aggressive construction schedule



Reduced labor and  
install time by **83%**

Increased density  
by **50%**

Eliminated risk  
of damage to  
materials

Alleviated safety  
concerns

viaPhoton, a customer-first, innovation-driven connectivity provider, delivers US-built custom-engineered solutions.

## viaPhoton *fischer*™ Intelligent Backup Power Solution\*

Delivers superior performance and is designed to reduce operating costs, optimize network reliability, and minimize environmental impact, significantly enhancing Fixed Wireless infrastructure performance.



*fischer*Primary Scalable from 100 AH - 500 AH

### Unique 17-Cell Grade A LiFePO Architecture Delivers up to 58V

- Boost support higher power radios over smaller cables
- Provides OpEx savings by improving Site Efficiency - extended back-up time

### Feature-Rich SNMP Remote Access

- Provides platform to support future enhancements (ie: intelligent generator interface)
- Remote access and integration with existing rectifiers allows for enhanced peak shaving and load sharing

### 20 Amp Aux Port allows for Prioritized Power

- Customizable and Configurable
- Allows not only backhaul to stay on-line for extended outage, but prioritized sites/sectors as well

### Exclusive Rectifier Reduction Technology (RRT)

- Synchronizes charging of batteries and eliminates nuisance breaker trips



Scan To Download Brochure

### US Based Engineering and Customer Support

\*Patent Pending

©2024 viaPhoton, Inc. All rights reserved.

# Specifications

viaPhoton *fischer*™



PART NUMBER	FBB-P100 and S100 for the Primary and Supplemental
Dimensions	6.75" T, 17.25" W, 19.5" D (including handles)
Weight	120 lbs
Mounting Dimensions	4U Tall, 19" Wide Racks, Bracket supports 24"-26" Depth
Battery Capacity	100 AH - 500 AH
Battery Type	Grade A Lithium Iron Phosphate
Nominal Operating Voltage	54 VDC
Operating Voltage Range	50-58 VDC
Warranty	5 years

## Features and Benefits

- Feature-Rich BMS, site control, and monitoring
- Remote BMS and site control access via SNMP
- LCD screen reports
- Auxiliary power output with breaker (20 amps)
- Quick-disconnect power connectors
- Extra cell for greater voltage range (up to 58 VDC)
- 'Easy install' mounting brackets
- Internal heater pad and power cabling included



Scalable from 100 AH - 500 AH



## Broadband Equity Access & Deployment Program

WINNCOM BEAD OVERVIEW ▾

STATE FUNDING OVERVIEW ▾

BEAD SERVICES ▾

BEAD ELIGIBLE PRODUCTS ▾

WEBINARS & EVENTS

CONTACT US



LOGIN



### WEBINARS

The Latest BEAD Updates & Strategies – What Service Providers Need to Know

Revealing essential updates on the Broadband Equity, Access, and Deployment (BEAD) program that could transform your approach to funding!



### SUPPLIERS & PRODUCTS

#### ACTIVE FIBER

Are you looking for a comprehensive Active Fiber solution that can cater to all your needs? Winncom offers a complete end-to-end solution that includes everything from system design to post-deployment support.



# Winncom BEAD Portal

[www.winncomus.com/bead/](http://www.winncomus.com/bead/)



## Winncom Technologies BEAD Roadshow

Join us for a productive day of professional development and networking.

NOKIA

TARANA

viaPhoton

CERAGON

litelinx  
Effortless. Excellent. Fiber.

Location: **WISP America 2025**  
Oklahoma City Convention Center  
- 2nd Floor Pre-Function Meeting Room Area

Date: **Monday, March 24, 2025**  
Time: **9:30 am - 4:00 pm**

**2025**  
**WISPAMERICA**  
BROADBAND WITHOUT BOUNDARIES



**Winncom Technologies**  
Premier Global Distribution

## Action Items:

1. Schedule a consultation to strategize on positioning your company for a successful BEAD application in your state
2. Schedule a call to learn more about **Winncom BEAD Programs**

## Contact Information

Winncom Bead Consultation: [BEAD@Winncom.com](mailto:BEAD@Winncom.com) & [a.cernik@winncom.com](mailto:a.cernik@winncom.com)

## Winncom Portal Links

BEAD Portal: [www.winncomus.com/bead/](http://www.winncomus.com/bead/)

Fiber Solutions Page: <https://www.winncom.com/en/solutions/fiber>

Tarana Wireless Landing Page: <https://www.winncom.com/en/manufacture/ViaPhoton>